



WHM0520-18AE

0.7- 2.0 GHz LOW NOISE WIDE BAND AMPLIFIER

REV C
August 2007

Key Features



- 0.7 ~ 2.0 GHz
- 1.0 dB Noise Figure
- 26.0 dBm Output IP₃
- 18.0 dB Gain
- +/-1.0 dB Gain Flatness
- 14.0 dBm P_{1dB}
- 1.35:1 VSWR Fully Matched
- Single Power Supply
- >300 Years MTBF
- RoHS Compliant
- MLS-1 Moisture Sensitivity Level

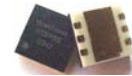
Product Description

WHM0520-18AE integrates WanTcom proprietary low noise amplifier technologies, high frequency micro electronic assembly techniques, and high reliability designs to realize optimum low noise figure, wideband, and high performances together. With single +5.0V DC operation, the amplifier has optimal input and output matching in the specified frequency range at 50-Ohm impedance system. The amplifier has standard 0.25" x 0.25" x 0.065" surface mount package.

The amplifier is designed to meet the rugged standard of MIL-STD-883.

Applications

- Mobile Infrastructures
- GPS
- CATV/DBS
- Defense
- Security System
- Measurement
- Fixed Wireless



Specifications

Summary of the key electrical specifications at room temperature

Index	Testing Item	Symbol	Test Constraints	Min	Nom	Max	Unit
1	Gain	S ₂₁	0.7 – 1.6 GHz	16	17.5	19	dB
2	Gain Variation	ΔG	0.7 – 1.6 GHz		+/-1.0		dB
3	Input Return Loss	S ₁₁	0.7 – 1.6 GHz	16	19		dB
4	Output Return Loss	S ₂₂	0.7 – 1.6 GHz	15	17		dB
5	Reverse Isolation	S ₁₂	0.7 – 1.6 GHz	20	22		dB
6	Noise Figure	NF	0.7 – 1.6 GHz		1.0	1.2	dB
7	Output Power 1dB Compression Point	P _{1dB}	0.7 – 1.6 GHz	13	14		dBm
8	Output-Third-Order Interception point	IP ₃	Two-Tone, P _{out} = 0 dBm each, 1 MHz separation	24	26		dBm
9	Current Consumption	I _{dd}	V _{dd} = +5.0 V		30		mA
10	Power Supply Operating Voltage	V _{dd}		+4.5	+5	+5.5	V
11	Thermal Resistance	R _{th,c}	Junction to case			215	°C/W
12	Operating Temperature	T _o		-55		+100	°C
13	Maximum Average RF Input Power	P _{IN, MAX}	DC – 6.0 GHz			10	dBm

Absolute Maximum Ratings

Parameters	Units	Ratings
DC Power Supply Voltage	V	7.0
Drain Current	mA	40
Total Power Dissipation	mW	280
RF Input Power	dBm	10
Channel Temperature	°C	150
Storage Temperature	°C	-65 ~ 150
Operating Temperature	°C	-55 ~ +100
Thermal Resistance	°C/W	215

Operation of this device beyond any one of these parameters may cause permanent damage.

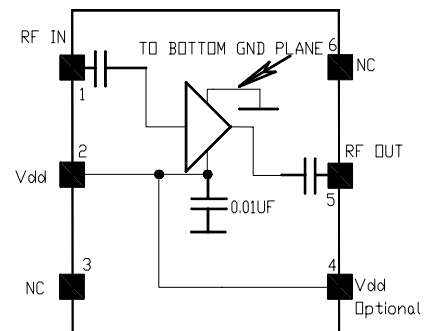
Ordering Information

Model Number	WHM0520-18AE
---------------------	--------------

Waffle pack with the capacity of 100 pieces (10 x 10) is used for the packing. Contact factory for tape and reel packing option for higher volume order.

Specifications and information are subject to change without notice.

Functional Block Diagram



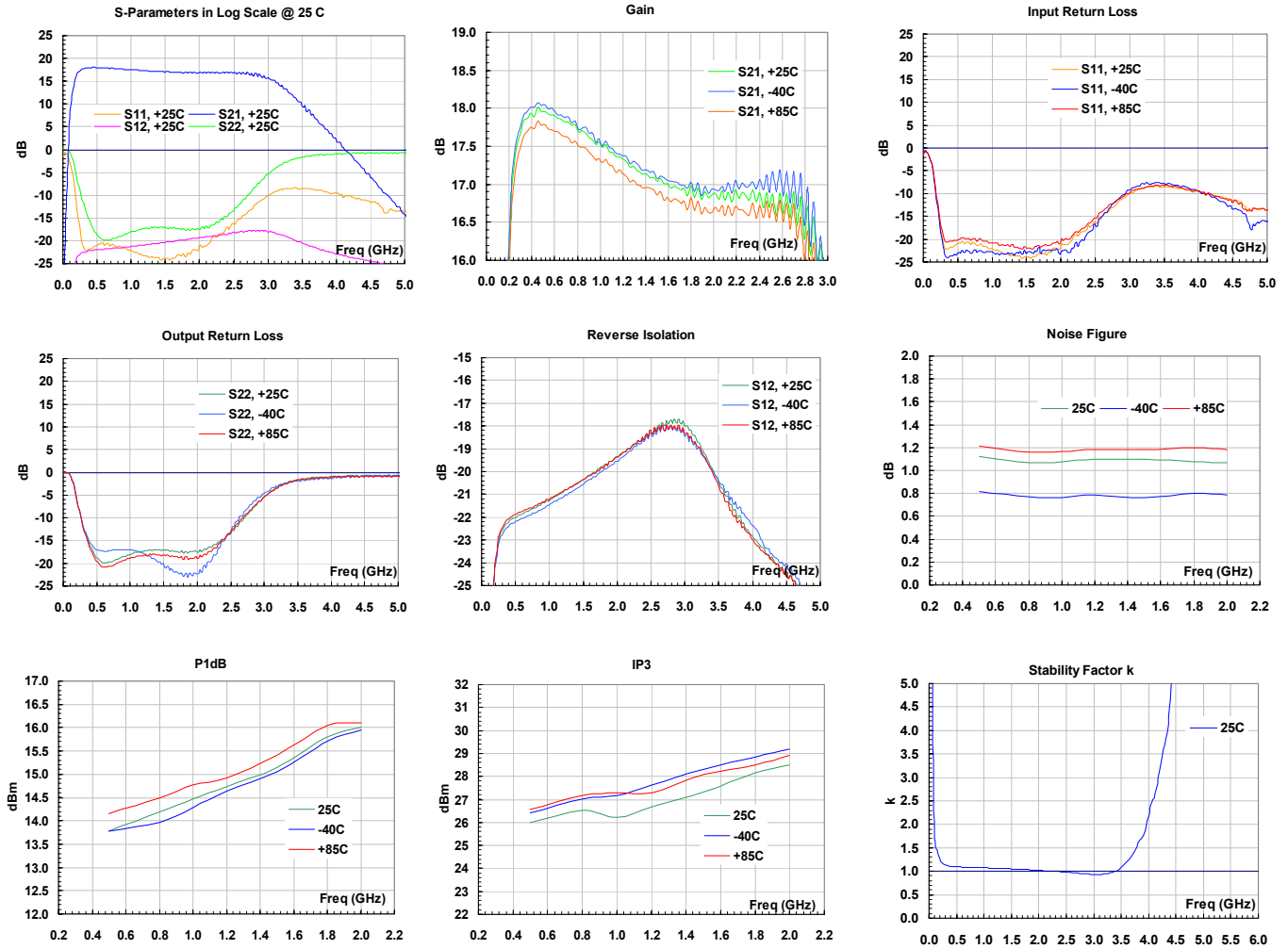


WHM0520-18AE

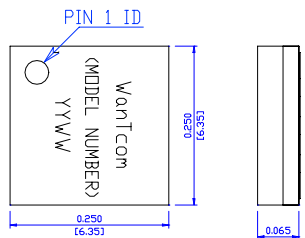
0.7- 2.0 GHz LOW NOISE WIDE BAND AMPLIFIER

REV C
August 2007

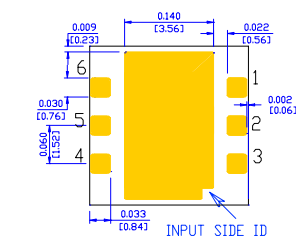
Typical Data



Outline, WHM-1

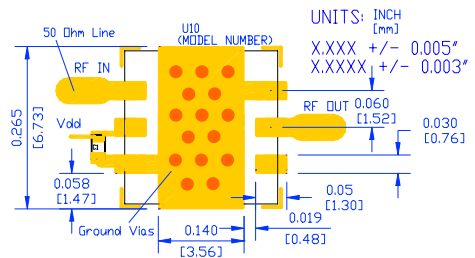


PIN	1	2	3	4	5	6	CTR
ID	RF IN	Vdd	NC	Vdd Option	RF OUT	NC	GND



UNITS: INCH [mm] Tolerance: X.XXX +/- 0.005"
X.XXXX +/- 0.003"
FINISH: 0.000010" MAX EMERSION GOLD PLATING.

Foot Print/Motherboard Layout



- NOTE:
1. THE BACKSIDE NEEDS TO BE METAL GROUND LAYER
 2. GROUND VIA DIAMETER IS 0.024" (0.61 mm)
 3. C1 IS 0.01 UF OR LARGER VALUE CAPACITOR
 4. MATERIAL: FR-4, 4000-13, FROM NELCO
 5. USE PROPER WIDTH FOR 50-OHM LINES FOR OTHER PCB MATERIAL

Specifications and information are subject to change without notice.



Small Signal S-Parameters:

! WHM0520-18AE, +25C, De-embedded S-parameters at $V_{dd}=5V$, $I_{dd}=33mA$, LRM calibration, last updated 8/26/07.

GHZ s MA R 50

!Freq(GHz)	MAGS11	ANGS11	MAGS21	ANGS21	MAGS12	ANGS12	MAGS22	ANGS22
0.05	0.68	135.70	0.82	-13.92	0.0045	-165.98	0.96	-29.89
0.10	0.63	79.16	2.16	-51.05	0.0190	157.85	0.88	-61.77
0.30	0.07	15.75	7.35	-154.14	0.0730	47.72	0.23	-160.06
0.40	0.09	22.93	7.70	176.10	0.0770	25.98	0.14	168.29
0.50	0.10	9.65	7.78	153.85	0.0790	10.95	0.10	131.93
0.70	0.10	-16.13	7.73	117.71	0.0820	-10.92	0.10	69.93
0.80	0.09	-28.45	7.66	101.94	0.0830	-19.64	0.11	49.22
0.90	0.09	-40.37	7.60	87.22	0.0850	-28.51	0.12	31.76
1.00	0.09	-51.12	7.52	72.75	0.0860	-35.53	0.13	17.39
1.20	0.07	-71.45	7.40	44.91	0.0900	-50.16	0.13	-6.72
1.40	0.06	-89.41	7.24	18.36	0.0940	-64.80	0.13	-28.28
1.50	0.06	-93.08	7.18	4.90	0.0970	-72.05	0.13	-38.13
1.60	0.05	-101.31	7.15	-8.24	0.0980	-79.20	0.12	-47.45
1.80	0.05	-116.51	7.09	-34.72	0.1030	-94.24	0.11	-65.14
1.90	0.05	-128.63	7.07	-48.11	0.1070	-101.38	0.11	-72.95
2.00	0.05	-139.09	7.06	-61.61	0.1100	-109.14	0.10	-80.31
2.20	0.07	-173.92	7.04	-88.84	0.1150	-124.72	0.11	-95.94
2.50	0.12	136.32	7.00	-132.81	0.1250	-149.91	0.16	-131.28
2.70	0.17	97.80	6.85	-164.41	0.1310	-169.04	0.24	-164.20
3.00	0.29	39.00	6.10	142.40	0.1330	159.25	0.44	138.59
3.20	0.36	0.08	5.02	105.02	0.1240	136.32	0.58	98.52
3.50	0.41	-53.27	3.08	52.67	0.0990	106.36	0.73	45.89
3.70	0.40	-83.59	2.09	23.29	0.0830	90.63	0.78	17.32
4.00	0.37	-120.43	1.16	-14.96	0.0670	69.96	0.82	-18.27
4.30	0.34	-150.77	0.66	-48.37	0.0560	51.39	0.85	-46.97
4.40	0.33	-160.31	0.55	-58.77	0.0530	44.42	0.85	-55.98
4.50	0.32	-167.58	0.46	-68.88	0.0500	37.92	0.85	-64.48
5.00	0.25	150.35	0.20	-109.69	0.0400	2.87	0.86	-102.96
5.50	0.15	121.17	0.10	-133.33	0.0300	-43.96	0.86	-138.66
6.00	0.11	103.90	0.06	-138.30	0.0220	-58.50	0.87	-168.70

Application Notes:

A. Motherboard Layout

The recommended motherboard layout is shown in **Figure 1**. Sufficient numbers of ground vias on the center pad are essential for the RF grounding. The width of the 50-Ohm microstrip lines at the input and output RF ports may be different for different property of the substrate. The ground plane on the backside of the substrate is needed to connect the center ground pad through the vias. The ground plane is also essential for the 50-Ohm microstrip line launches at the input and output ports.

The +5V DC voltage can be applied either to Pin 2 or Pin 4 depending on the actual available +5V source. **Figure 2** shows the motherboard, which the DC power is connected to Pin 2. It is not recommended to connect Pin 2 and Pin 4 together externally, which may cause the parasitic external feedback between the output and input ports through the connection to excite the parasitic oscillation.

For +5V line trace length being longer than 6 inches without a decoupling capacitor, a 0.1 uF de-coupling capacitor, C₁, with minimum rating voltage of 10V is needed across the +5V pin to ground. The capacitor must be rated in the temperature range of -55 °C to 100 °C to ensure the entire circuit work in the specified temperature range. C₁ needs to locate very close to Pin 2 to eliminate the possible RF input signal loss due to the coupling between Pin 1 and Pin 2. Failing to do that may cause 0.10 dB to 0.20 dB additional loss at the input port and thus the noise figure will increase at that amount.

No DC block capacitor is required at input and output RF ports. The NC pins connecting to ground are recommended.

Specifications and information are subject to change without notice.

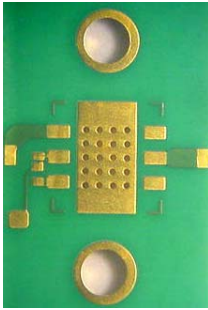


Fig. 1 Motherboard foot print

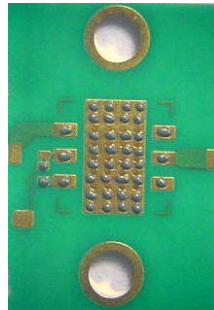


Fig. 2 Dispensed solder paste

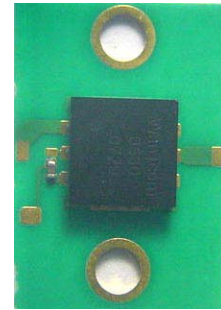


Fig. 3 Assembled part

B. Assembly

The regular low temperature and none clean solder paste such as SN63 is recommended. The high temperature solder has been used internally for the WHM series amplifier assembly. The melting temperature point of the high temperature solder is around 217 ~ 220 °C. Thus, melting temperature of the solder paste should be below 217 °C for assembling WHM series amplifier on the test board to reduce the possible damage. The temperature melting point of the SN63 solder paste is around 183 °C and is suitable for the assembly purpose.

The SN63 solder paste can be dispensed by a needle manually or driven by a compressed air. **Figure 2** shows the example of the dispensed solder paste pattern. Each solder paste dot is in the diameter of 0.005" ~ 0.010" (0.125 ~ 0.250 mm).

For volume assembly, a stencil with 0.004" (0.10 mm) is recommended to print the solder paste on the circuit board.

For more detail assembly process, refer to AN-109 at www.wantcominc.com website.

C. Electrical Testing and Fine Tuning

The amplifier is designed to be fully matched at the input and output ports. Any tuning is not needed. However, when connecting the assembled amplifier to a device such as a SMA connector or a filter, the connecting point or joint point could affect mainly the return loss at the port due to the non-ideal 50-Ohm impedance of the device. By varying the connection feature size such as the solder amount to get the optimum return loss or best matching result at the interface. This fine-tuning has little affect on the other performance such as gain, noise figure, P_{1dB} , or IP_3 .

During the fine-tuning process, a vector network analyzer can be used to monitoring the return loss at the port while varying the feature size of the joint point. Varying the connection feature size until the optimum return loss is achieved.
